

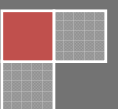
2020

HomeSeer HomeTroller Zee S2 Controller Manual

This HomeSeer HomeTroller Zee S2 Controller Manual describes the steps required to setup the HomeTroller controller.

© 2008-2020 Climate Automation Systems

Saving the Earth one kilowatt at a time
Version 4.0.2 4/8/2020



All Rights Reserved. No part of this document may be photocopied, reproduced, stored in a retrieval system, or transmitted, in any form or by any means whether, electronic, mechanical, or otherwise without the prior written permission of Climate Automation Systems.

No warranty of accuracy is given concerning the contents of the information contained in this publication. To the extent permitted by law no liability (including liability to any person by reason of negligence) will be accepted by Climate Automation Systems, its subsidiaries or employees for any direct or indirect loss or damage caused by omissions from or inaccuracies in this document.

Climate Automation Systems reserves the right to change details in this publication without notice.

Windows is a trademark and Microsoft, MS-DOS, and Windows NT are registered trademarks of Microsoft Corporation. Other product and company names herein may be the trademarks of their respective owners.

Table of Contents

HomeTroller Initial Setup 4

Accessing the Web Interface 4

Set Your System Password 5

Activate and Register Your HomeTroller Zee Online..... 6

Update Your HomeTroller Zee and Set the Time Zone 7

Setup Static IP Address 9

Enable Remote Control Settings..... 10

Adding Z-Wave Devices (wall switches, receptacles, plug-in modules, sensors, door locks, etc)
..... 11

Removing (or resetting) Z-Wave Devices 13

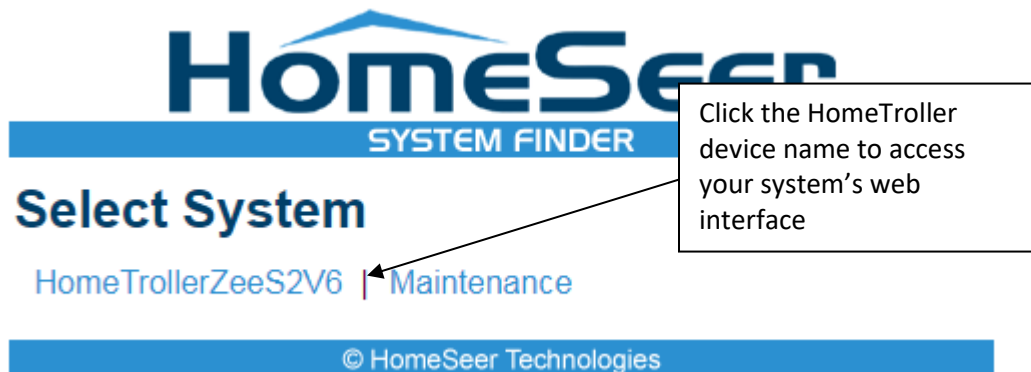
Assign Device Names to Z-Wave Nodes 15

HomeTroller Initial Setup

1. Unpack the HomeTroller Zee, Ethernet cable and AC power supply.
2. Connect the Ethernet cable to your HomeTroller Zee and to a network port on your internet router.
3. Connect the AC power adapter to your HomeTroller Zee to begin the boot process. Allow the unit to boot fully (about 45 seconds to 1 minute).

Accessing the Web Interface

1. Once the unit boots, you'll need to access the web interface to set the system up. The method below should work with any web-enabled device. We recommend using Google Chrome
2. Navigate to <http://find.homeseer.com>
3. If the HomeTroller device name does not appear in the list, click the "Search" button. Your HomeSeer system should now appear at the bottom.
- 4.



Set Your System Password

The system password screen will appear the first time you run your HomeTroller Zee. You **MUST** set a system password to prevent unauthorized access to your unit. Please do this now by following the prompts on your screen. Choose a secure password that will also be easy for you to remember.

The screenshot shows a web browser window with the address bar displaying "192.168.1.89". The page title is "System". The top navigation bar includes "HOME", "VIEW", "TOOLS", and "PLUG-INS". The main content area has a blue header with the "HomeSeer" logo and a status bar showing "System 10/7/2019 9:21:10 AM", "Sunrise: 5:12 AM", "Sunset: 8:23 PM", and "User: default".

You MUST change the System Password and Create a Web Interface Login to Prevent Unauthorized Access to your system. Follow All Steps Below:

System Password (required for access to Linux tools)

- 1) Enter hsthsths3 in the Current Password field.
- 2) Enter and Confirm your New Password.

Current Password:

New Password:

Confirm New Password:

Web Interface Login (required for access to all setup functions)

- 3) Change the Web Username from default to something else.
- 4) Enter and Confirm your New Password.
- 5) Click Submit below.

New Web Username:

New Password:

Confirm New Password:

NOTE: Keep the new password safe! If it is lost, there is no way to retrieve it!

Home | Device Status | Device Management | Events | Log | Setup | Global Elements | Control Panel | Manage Plug-ins | About

System 10/7/2019 9:21:10 AM Sunrise: 5:12 AM Sunset: 8:23 PM User: default

HOME VIEW TOOLS PLUG-INS

You MUST change the System Password and Create a Web Interface Login to Prevent Unauthorized Access to your system. Follow All Steps Below:

System Password (required for access to Linux tools)

1) Enter hsthsths3 in the Current Password field.
2) Enter and Confirm your New Password.

Current Password:

New Password:

Confirm New Password:

Web Interface Login (required for access to all setup functions)

3) Change the Web Username from default to something else.
4) Enter and Confirm your New Password.
5) Click Submit below.

New Web Username:

New Password:

Confirm New Password:

NOTE: Keep the new password safe! If it is lost, there is no way to retrieve it!

Home | Device Status | Device Management | Events | Log | Setup | Global Elements | Control Panel | Manage Plug-ins | About

Activate and Register Your HomeTroller Zee Online

Be sure to activate your HomeTroller Zee and register the unit to receive HomeSeer support. To do this, make sure your unit is connected to the internet and follow these steps:

1. From the HomeTroller Zee web interface, use the pull down menus to navigate to the General Tab of the Setup Area (TOOLS > Setup)
2. Click the "Register Online" button in the License section of the Setup screen and enter your license codes. Note: License codes are included on a sticker on the bottom of your HomeTroller Zee.

Registration 10/7/2019 9:26:02 AM Sunrise: 5:12 AM Sunset: 8:23 PM User: richard

HOME VIEW TOOLS PLUG-INS

Software License Registration

This software is unregistered and will not operate until you register it. Please enter your registration information below.

[Click here for instant online registration.](#)

Registration x +

← → ↻ ⚠ Not secure | 192.168.1.89/registration?page=online_license

Registration 10/7/2019 9:26:33 AM Sunrise: 5:12 AM Sunset: 8:23 PM User: richard HomeSeer

HOME VIEW TOOLS PLUG-INS ?

Online License Registration

License ID:

Password:

If you are entering an upgrade license above, and this is the first time you are registering, you must enter the license ID and password of the license you are upgrading

Old License ID:

Old Password:

If you do not have a License ID, you may purchase one or get a FREE trial license [here](#).

Registration x +

← → ↻ ⚠ Not secure | 192.168.1.89/registration?page=userinfo

Registration 10/7/2019 9:28:21 AM Sunrise: 5:12 AM Sunset: 8:23 PM User: richard HomeSeer

HOME VIEW TOOLS PLUG-INS ?

Enter User Information

Note: You must register at least an email address in order to register a plugin.
Note: You must register to enable your FREE lifetime technical support!

Company

First Name

Last Name

Email

Telephone

Address

Address 2

Address 3

City

State

Country

Zip

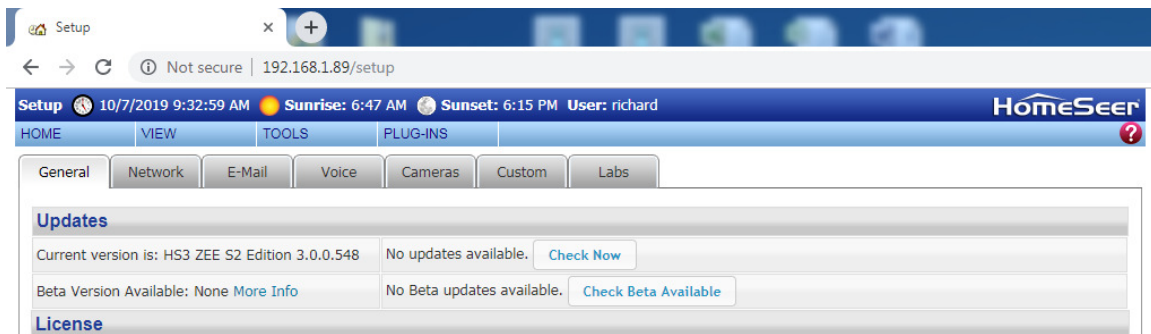
Add to email list and be notified about updates and special offers: ☐

[Click here to continue to the Device Management page.](#)

[Click here to register for your FREE remote access account and easily access your HomeSeer system from any web browser or phone.](#)

Update Your HomeTroller Zee and Set the Time Zone

1. From the HomeTroller Zee web interface, use the pull down menus to navigate to the General Tab of the Setup Area (TOOLS > Setup). If an update is available, click the update button near to top of the page and wait for the update to download and install. Your HomeTroller Zee will automatically reboot once the update is installed.



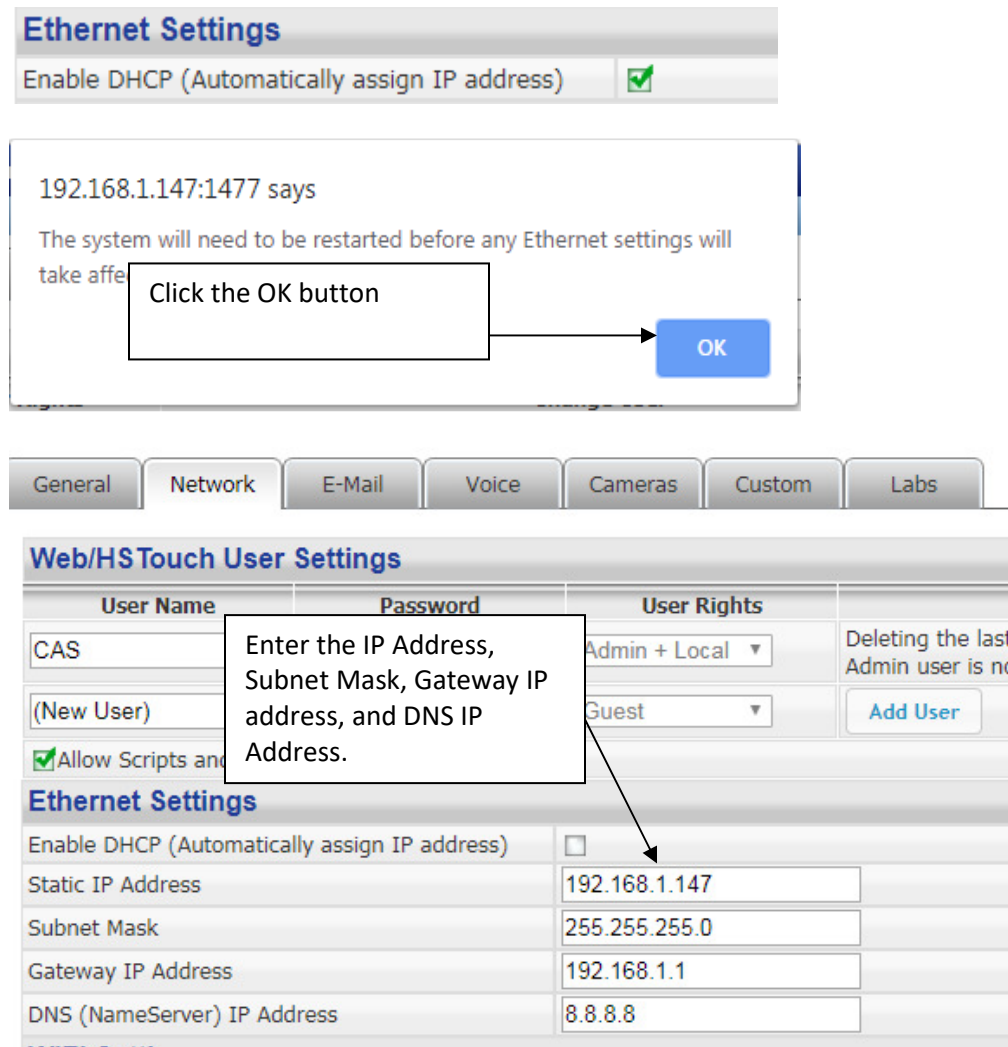
2. Access the General Tab of the Setup Area again and scroll to the “Location” area. Find the Time Zone field and change that to time zone where your HomeTroller Zee is installed. Example: US – America/New York

Location (Sunrise/Sunset) Settings	
Time Zone	US America/New_York
Location	US-Georgia, Atlanta (-84.4, 33.75)
Latitude	33.75
Longitude	-84.4

Setup Static IP Address

From the HomeTroller Zee web interface, use the pull down menus to navigate to the General Tab of the Setup Area (TOOLS > Setup). Select the Network tab.

Uncheck the Enable DHCP (Automatically assign IP address)



Ethernet Settings

Enable DHCP (Automatically assign IP address) ☒

192.168.1.147:1477 says
The system will need to be restarted before any Ethernet settings will take effect.

Click the OK button

OK

General Network E-Mail Voice Cameras Custom Labs

Web/HS Touch User Settings

User Name	Password	User Rights	
CAS		Admin + Local	Deleting the last Admin user is no Add User
(New User)		Guest	
<input checked="" type="checkbox"/> Allow Scripts and			

Ethernet Settings

Enable DHCP (Automatically assign IP address) ☐

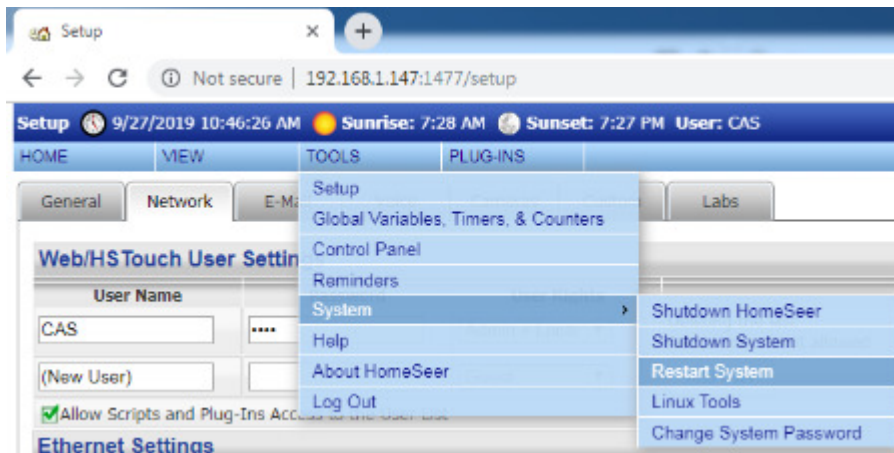
Static IP Address 192.168.1.147

Subnet Mask 255.255.255.0

Gateway IP Address 192.168.1.1

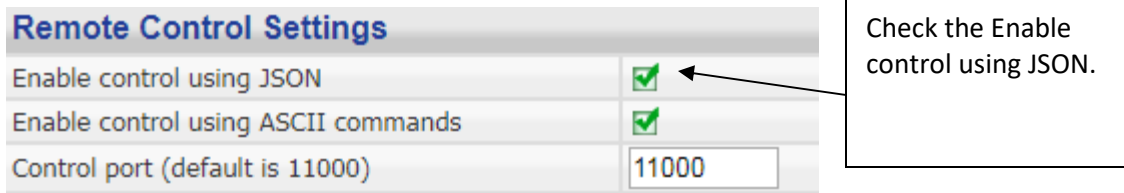
DNS (NameServer) IP Address 8.8.8.8

Restart the HomeTroller system. Click on the Tools Menu option, select System, and click on the Restart System menu option. This process can take up to 90 seconds to complete.



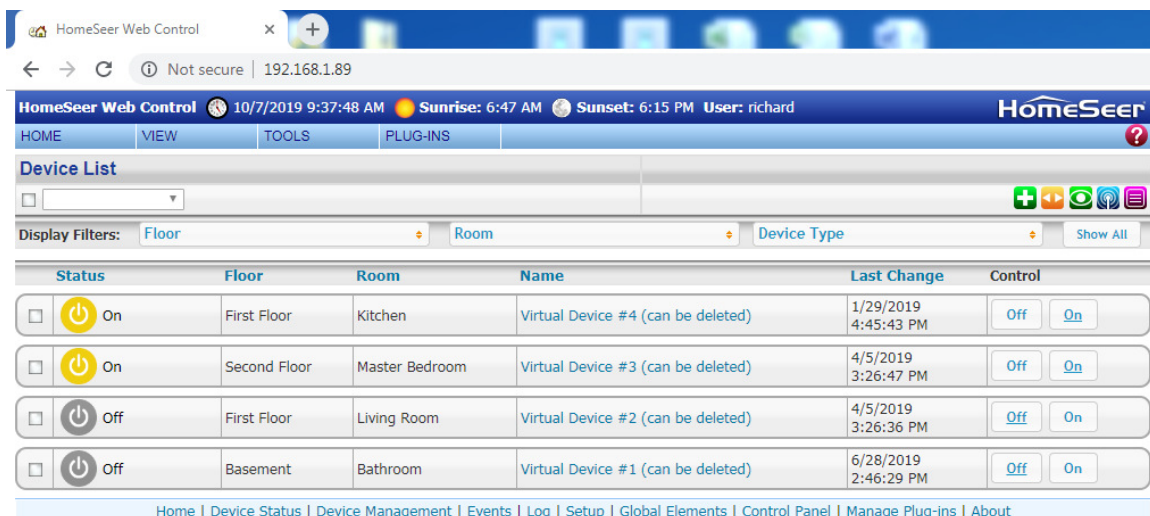
Enable Remote Control Settings

1. Click on the Tools Menu option, select Setup, and click on the Network Tab. Scroll down to the Remote Control Settings.



2. Restart the HomeTroller system. Click on the Tools Menu option, select System, and click on the Restart System menu option. This process can take up to 90 seconds to complete.

Remove Virtual Devices from the Device List



Modify First Floor Kitch... 10/7/2019 9:38:02 AM Sunrise: 6:47 AM Sunset: 6:15 PM User: richard HomeSeer

HOME VIEW TOOLS PLUG-INS

Configuration Advanced Status Graphics

Device Name: Virtual Device #4 (can be deleted)

Voice Command:

Floor: First Floor New Floor

Room: Kitchen New Room

Code: Display Available Codes

Address:

Status Only Device: ☐

Is Dimmable: ☐

Is Light: ☐

Hide device from mobile views: ☐

Hide device from views: ☐

Do not log commands from this device: ☐

Voice command: ☒

Confirm voice command: ☐

Include in power fail recovery: ☐

Use pop-up dialog for control: ☐

Do not update device last change time if device value does not change: ☒

User Access: Any User

Select Users

Notes:

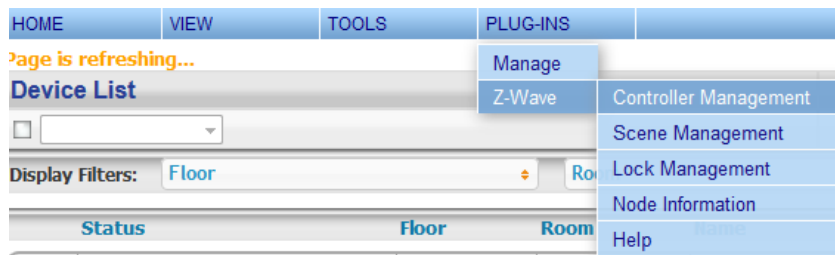
Linked Device: Not Linked

Delete Select Device Image Done

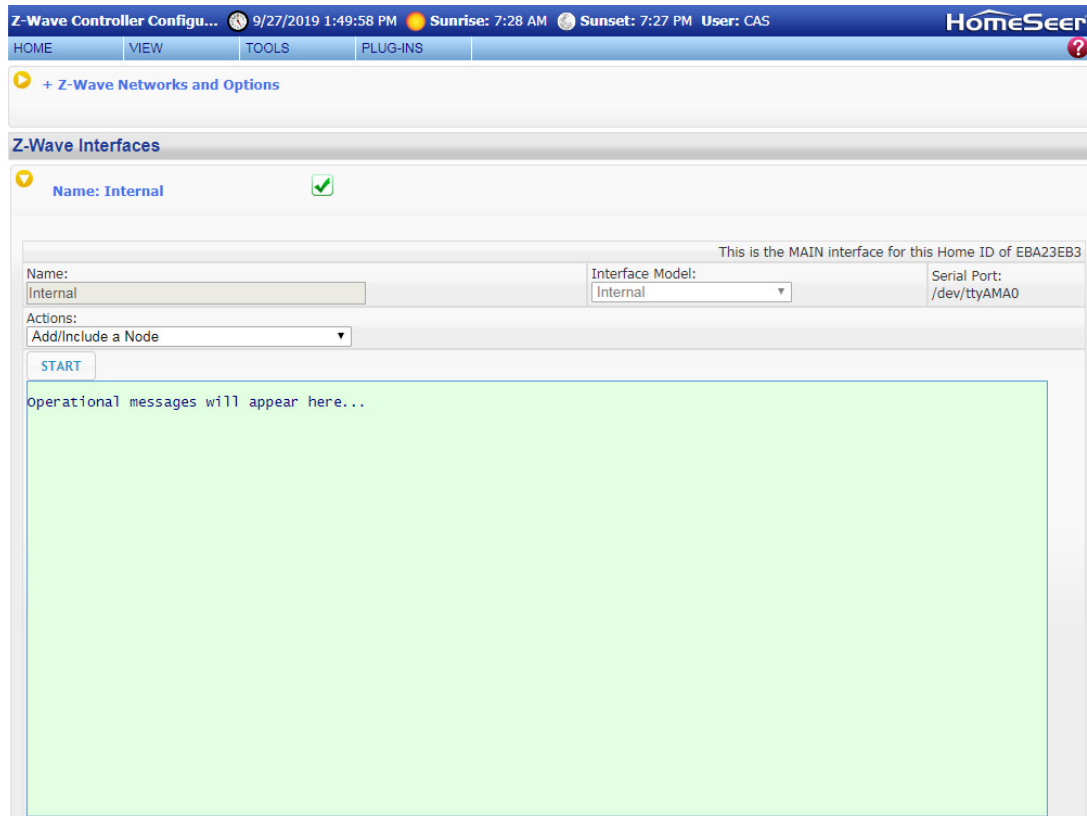
Home | Device Status | Device Management | Events | Log | Setup | Global Elements | Control Panel | Manage Plug-ins | About

Adding Z-Wave Devices (wall switches, receptacles, plug-in modules, sensors, door locks, etc)

1. From the web interface, Select the Plug-Ins Menu option, select the Z-Wave option and click on the Controller Management.



2. Locate the "Z-Wave Interfaces" area and expand your Z-Wave Controller section. Open the "Actions:" menu and choose "Add/Include a Node".



3. Click the 'Start' button below the Actions menu. Your HomeTroller is now in inclusion mode and is ready to communicate with your device.
4. Activate the network button (or button sequence) on your Z-Wave device (refer to the installation manual that was provided with the device) and observe the inclusion process in the green log window. When done, you'll receive an acknowledgement such as "Finished with Replication process" and a "Close" button will appear above the log window.

Z-Wave Interfaces

✓ **Name:** Internal ✓

This is the MAIN interface for this Home ID of EBA23EB3

Name: Internal	Interface Model: Internal ▼	Serial Port: /dev/ttyAMA0
--------------------------	---------------------------------------	-------------------------------------

Actions:
Add/Include a Node ▼

ABORT CLOSE

```

Add Node started...
Activate the 'Add to Network' function on the device...
Activate the 'Add to Network' function on the device...
A new node is being added...
Adding a new SLAVE NODE...
DONE - Add Node Operation is Complete.
Done. Node 11 Added.
Reloading (importing) node information...
Synchronizing node information with HomeSeer and creating new device(s) as necessary...
Synchronize nodes finished. Number of device nodes to be created/added = 1
Z-wave manufacturer information for node 11, ID: 57=39H (Honeywell), Type: 17=11H, ID: 8=8H
Node: 11 Supports Class(es): ZWAVEPLUS_INFO, ASSOCIATION, VERSION, ASSOCIATION_GRP_INFO, SENSOR_MULTILEVEL_V7, BATTERY,
Node 11 is Z-wave version: Lib: 4.61 App: 1.3
Node 11 is a Z-Wave Plus node. Retrieving ZWPlus Info...
Node 11 Supports 1 Notification Types: Power_Management
Power_Management Supports Events: AC Mains Disconnected(2), AC Mains ReConnected(3)
Node 11 Supports Thermostat Fan Mode CC and supports these modes: Auto, On, Circulation
Node 11 Supports Thermostat Mode CC and supports these modes: Off, Heat, Cool, Energy Save Heat, Energy Save Cool
Node 11 Supports Thermostat Setpoint CC and supports these setpoints: Heating 1, Cooling 1, Energy Save Heating, Energy
All associations for node 11 have been retrieved successfully, it supports associations on these groups: 1.
Root Node Device Node 11 Z-wave Thermostat was created for node 11 on network EBA23EB3
Internal: Adding association for Z-wave device Node 11 Z-wave Thermostat (Node 11, Group 1) to HomeSeer
12 out of 12 child devices of node 11 were created successfully.
Finished.
Saving network information to file: ZNet_Network EBA23EB3_EBA23EB3_2019-09-27_13.57.39.ZWave. Please wait...
Done!
  
```

5. Your Z-Wave device is now included into your Z-Wave network and can be controlled with your HomeTroller!

Removing (or resetting) Z-Wave Devices

1. Follow this procedure if you have difficulty adding a device or if you wish to remove a device from your network.
2. From the web interface, use the pull-down menus to navigate to the Z-Wave Controller Management page (PLUG-INS > Z-Wave > Controller Management).
3. Locate the “Z-Wave Interfaces” area and expand your Z-Wave Controller section. Open the “Actions:” menu and choose “Remove/Exclude a Node”.

Z-Wave Interfaces

✓ **Name: Internal** ✓

This is the MAIN interface for this Home ID of EBA23EB3

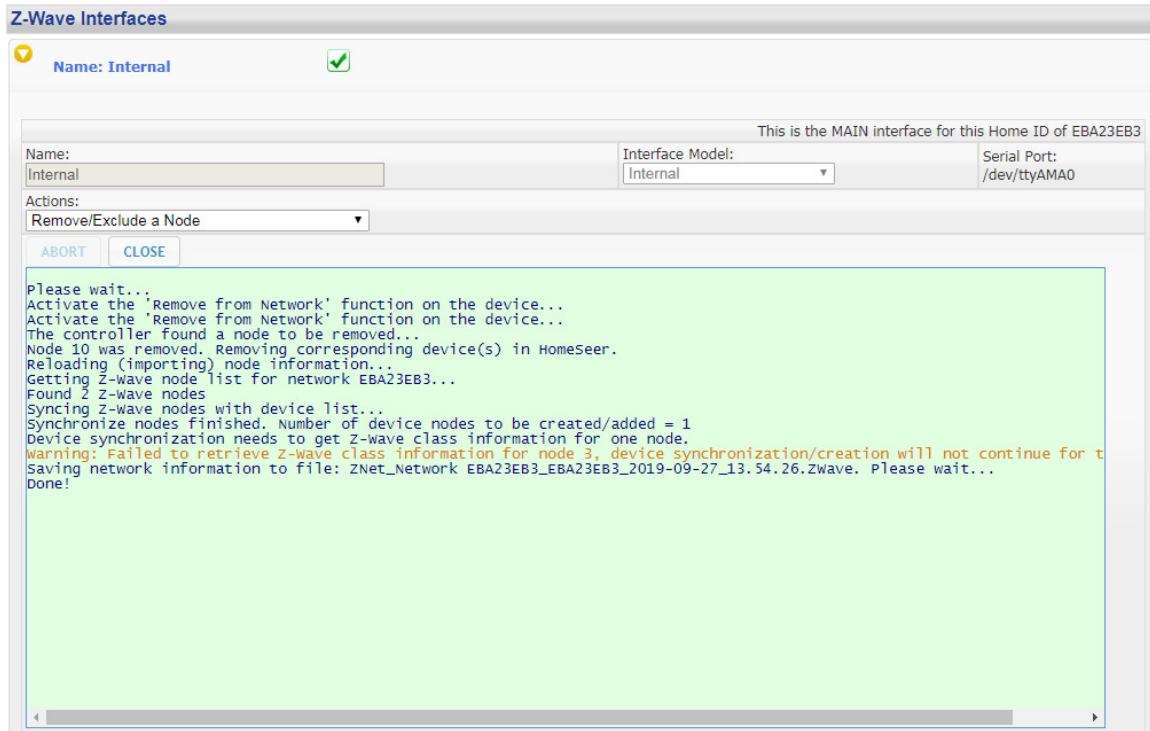
Name: Internal	Interface Model: Internal	Serial Port: /dev/ttyAMA0
-------------------	------------------------------	------------------------------

Actions:
Remove/Exclude a Node

START

operational messages will appear here...

4. Click the 'Start' button below the Actions menu. Your HomeTroller is now in deletion mode and is ready to communicate with your device.
5. Activate the network button (or button sequence) on your device (refer to the installation manual that was provided with the device) and observe the deletion process in the green log window. When done, you'll receive an acknowledgement such as "Finished with Replication process".

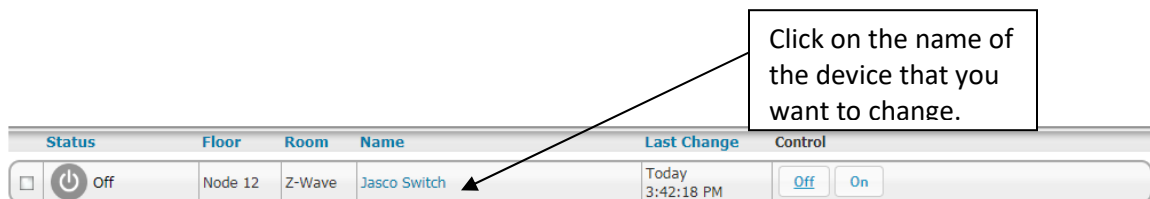


6. Your Z-Wave device has been reset and is removed from your Z-Wave network!

Assign Device Names to Z-Wave Nodes

The HomeSeer Web Control software allows you to assign a device name to a Z-Wave node.

From the web interface, Select the Home menu option.



Modify Node 12 Z-Wave Jas... 9/27/2019 3:48:13 PM Sunrise: 7:28 AM Sunset: 7:27 PM User: CAS HomeSeer

HOME VIEW TOOLS PLUG-INS

Configuration Advanced Status Graphics Z-Wave

Device Name: Jasco Switch

Voice Command:

Floor: Node 12 New Floor

Room: Z-Wave New Room

Code: Display Available Codes

Address: EBA23EB3-012

Status Only Device: ☐

Is Dimmable: ☐

Is Light: ☐

Hide device from mobile views: ☐

Hide device from views: ☐

Do not log commands from this device: ☐

Voice command: ☐

Confirm voice command: ☐

Include in power fail recovery: ☐

Use pop-up dialog for control: ☐

Do not update device last change time if device value does not change: ☒

Users that have access:

User Access: Any User

Select Users

Notes:

Click on the Device name text box. A dialog will appear where you can enter the name of the device.

DEVICE IMAGE NOT SELECTED

Enter device Name

Study Outlet

Cancel Submit

Click the submit button.