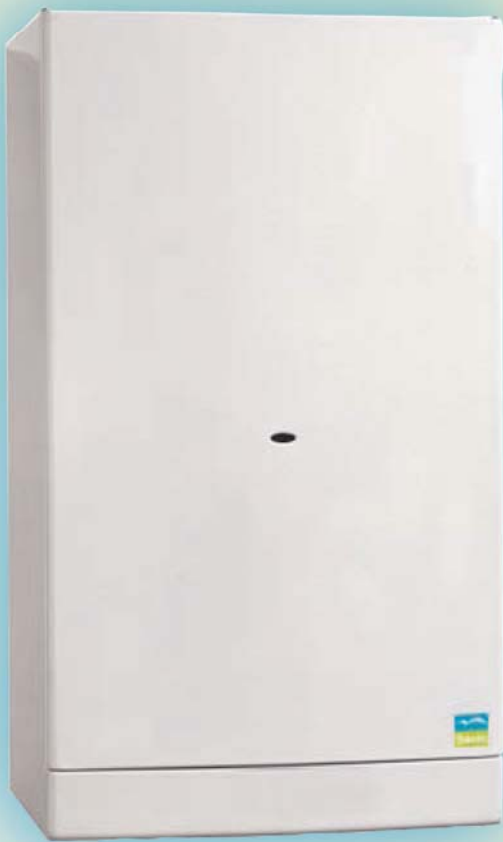




Wall Hung Gas Boilers



Savio *Brings Technology and Efficiency to Your Home*

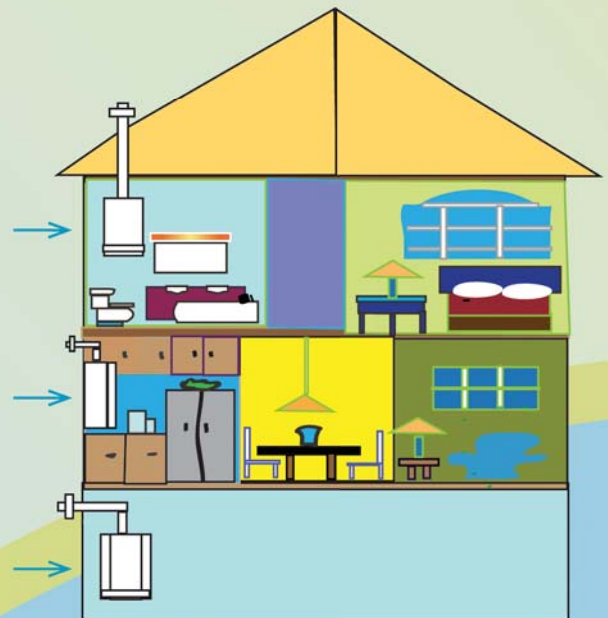


SAVIO and SAVIO PLUS OPERATIONAL FEATURES

- Gas fired CSA certified wall hung sealed combustion boiler
- Natural gas or propane
- Modulating boiler 49,000 BTU/Hr to 116,000 BTU/Hr
- Instantaneous domestic hot water w/ flat plate heat exchanger
- FLOW RATE 3 GPM @ 70°Δ
- Control panel with easy to read LED diagnostics
- Less than 1 gallon boiler water content
- Can be used with Radiant heat
- Can be used with Solar heat
- 2 year complete 10 Heat exchanger warranty.

INSTALLATION FEATURES

- Can be installed in closets, check required clearances before installing
- Versatile venting configurations – Horizontal, Concentric, Roof
- Concentric venting is aluminum
- Heat only venting system aluminum
- Mounting template includes stub out kit for ease of installation



SAVIO boilers may be installed in closets and offer quiet operation with low power consumption.

1-800-572-7831
www-eagle-mt.com



SAVIO and SAVIO PLUS SAFETY FEATURES

- Safety flow switch to prevent thermal shock
- 3 way valve to prioritize domestic water
- Stainless steel burner
- Electronic spark ignition
- Built in expansion tank
- Built in overheat thermostat
- Built in bypass to assure the required flow through the heat exchanger
- ASME CERTIFIED coated copper primary heat exchanger
- Built in air purge valve
- Built in air pressure switch
- Built in pump exerciser every 24 hours
- Built in frost protection

Savio Boiler Specifications

Model	Savio Heat Only	Savio FP	Savio Plus	Savio Plus FP
Efficiency	82%	82%	90+ %	90+ %
Maximum Heat Input	122,800	122,800	116,000	116,000
Minimum Heat Input	49,500	49,500	49,000	49,000
Maximum Heat Output	100,700	100,700	103,000	103,000
Sealed Combustion	Yes	Yes	Yes	Yes
Ignition	Electronic Spark	Electronic Spark	Electronic Spark	Electronic Spark
Maximum Pressure psi	30 psi	30 psi	30 psi	30 psi
Temperature Regulation System Range	100° - 185°F	100° - 185°F	100° - 185°F	100° - 185°F
Dimensions	Height	27-3/4"	27-3/4"	31-9/16"
	Width	15-3/4"	15-3/4"	15-3/4"
	Depth	12-5/8"	12-5/8"	13-1/2"
Domestic Water Flow Rate Δ@ 70°	N/A	3.0 GPM	N/A	3.0 GPM
Domestic Water Temperature	N/A	95°-130°	N/A	95°-130°
Domestic Water Pressure	N/A	5 – 145 psi	N/A	5 – 145 psi
Net Weight lbs.	79 lbs.	79 lbs	110 lbs	110 lbs
Gas Type	NG/LP	NG/LP	NG/LP	NG/LP
Voltage	120 VAC/60Hz	120 VAC/60Hz	120 VAC/60Hz	120 VAC/60Hz
Water Content	≤ 1 gallon	≤ 1 gallon	≤ 1 gallon	≤ 1 gallon



4376 Bristol Valley Rd, Canandaigua, NY. 14424

Phone: 1.800.572.7831 Fax: 206.309.0049

www.eagle-mt.com