



# What is INSUL-TARP®?

**Insul-Tarp®** is a patented, revolutionary product like no other on the market today. Its lightweight, Space Age design integrates closed cell foam and an aluminum reflective material with a protective poly coating, all within three, thin layers. The durable poly coating protects the insulation material from potentially damaging surfaces and is impermeable to moisture, helping it to maintain a high R-Value in a minimal amount of space. The superior physical characteristics and overall design of **Insul-Tarp®** make it the ideal product for insulating under concrete slabs in residential, commercial and agricultural radiant heating systems.



**Insul-Tarp®**'s innovative combination of layers and reflective material enable it to effectively address all three modes of heat transfer: Conduction, Convection and Radiation, improving the performance of the radiant heating system and providing a high slab temperature output.

**Insul-Tarp®** insulation was designed specifically for under-slab applications. **Insul-Tarp®** provides excellent thermal performance and a vapor barrier, all in one easy to use product. In addition to its thermal and vapor barrier qualities, **Insul-Tarp®** will install in a fraction of the time compared to other products on the market. For example, one 12' x 50' roll of **Insul-Tarp®** will cover approximately 575 square feet. To cover that same area with 4' x 8' sheets of foam board, you would need about 18 pieces. That results in additional time and labor costs. Make the switch today and see the difference!

## Insul-Tarp®

### - Easy to Install

Lightweight, minimal seaming, rolled into place

### - Greater Profits

Competitively priced  
Installed in a fraction of the time

### - Consistent Performance

Not affected by moisture or humidity  
R-Values remain consistent over time

### - The Right Choice

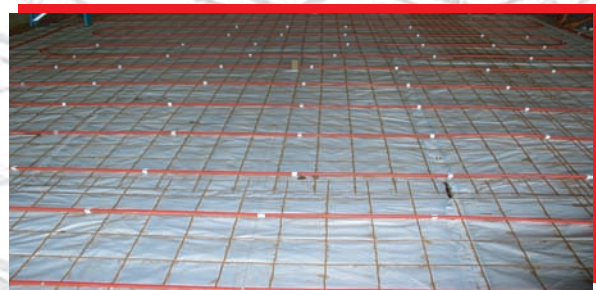
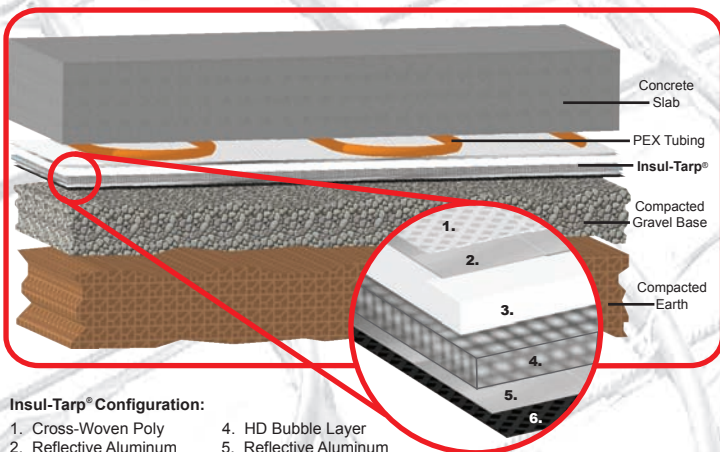
**Insul-Tarp®**'s patented technology leaves all other insulation practices out in the cold. When you install **Insul-Tarp®**, you can rest assured that you are using a quality product for your under-slab insulation needs.

## Insul-Tarp® Roll Sizes:

18" x 50', 2' x 50', 3' x 50', 4' x 50'  
6' x 25', 6' x 50', 12' x 25', 12' x 50'

**Note:** 12' rolls consist of (2) 6' rolls seamed together.

Widths on these rolls will vary. On any roll size, always estimate 10% extra to ensure you order enough for proper coverage.



**Insul-Tarp®** as shown here, has been rolled out and installed with radiant tubing clipped to wire mesh.



**EAGLE MOUNTAIN™**

Contact Eagle Mountain at 1-800-572-7831.  
www.eagle-mt.com

**InsulationSolutions®**