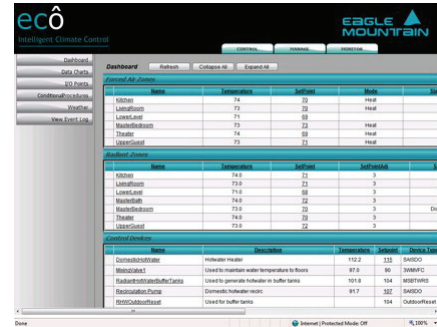


Ecô: Energy Management System

The first system of its kind, Ecô introduces intelligent climate control technologies to the residential and small commercial HVAC marketplace.



Ecô is a browser-based management system that can be monitored and controlled remotely, from any Internet connection, including a handheld device such as a PDA or iTouch.

The Ecô system also has the ability to interface with National Weather Service data to adjust set points in anticipation of weather changes, and provides system health updates and reports errors to users via e-mail or text messaging.

In addition, Ecô accumulates historical data for analysis and generates real-time performance data. The Ecô system empowers consumers to reduce personal energy consumption and delivers a unique and fully integrated alternative-energy HVAC solution.

ECO Hardware:

- Control Box
- Power Supply
- Windows PC
- I/O Device
- Flash Memory (For Backup)
- RS-485 Wiring
- Temperature Sensors
- Touch Screen Display (Option)
- Communicating T-Stat (Option)
- Serial Server (Option)



800-572-7831
www.eagle-mt.com



Ecô FEATURES:

- Ecô is a rules based system that does not require any custom programming to install or use. All tables and rules used by the system are entered using a standard web browser via point and click menus.
- Ecô maintains a SQL Server database that is used to calculate performance and compute Climate Control Strategies (CCS).
- Ecô accumulates historically:
 - a. kilowatt hour consumption by device
 - b. temperature variations by zone
 - c. zone efficiencies
 - d. radiant water temperatures by zone
- Ecô interfaces with the National Weather Service to gather forecasts that are used to alter climate control strategies.
- Ecô optimizes and manages the combined use of forced-air and radiant systems to achieve ideal comfort, energy savings, and strategic use of energy resources.
- Ecô allows users to report their level of comfort by zone and modifies climate control strategies accordingly.
- Users/installers can select from different radiant control strategies, e.g., constant circulation, slab sensor or T-Stat control, outdoor reset, proportional reset, return water temperature differential, etc. This is accomplished using virtual device drivers not mechanical room hardware.
- User defines Climate Profiles (CP) by zone: Vacation, Summer/Winter, transitional, on/off.
- Climate Profiles define on/off events and temperature strategies by date and time. For example, turn off the master bedroom floors at 11PM but turn on the forced-air in enough time to heat the room to 68 by 7AM. Or, turn off the domestic hot water heater at 11PM and back on again at 6AM.
- Ecô generates web forms so that users can view and operate the environment from any browser anywhere in the world.
- Ecô automatically backs up its files locally and on the Ecô web server.
- Ecô constantly monitors the health of the environment and the mechanical systems and reports problems to the property owner or service company via email or text messaging.



*USGBC® and related logo is a trademark owned by the U.S. Green Building Council and is used by permission.